

Mid career training - for the IFS officers Chhattisgarh

B. Ananda Babu
Conservator of forests &
Commissioner, Housing board

Mid career training-Participants

Phase	Officers attended MCT	Batch
Phase-III	<ol style="list-style-type: none">1. Smt. Praneeta Paul2. Shri Rajesh S. Kallaje3. Smt. Shalini Raina4. Smt. Soma Das	2001-02
Phase-IV	<ol style="list-style-type: none">1. Shri B. Anand Babu2. Shri V. Shettipanawar3. Shri Kaushalendra Kumar4. Shri Alok Katiyar5. Shri Arun Pandey6. Shri I. N. Sing7. Shri Sunil Mishra	1992-94
Phase-V	<ol style="list-style-type: none">1. Shri Pradip Kumar Pant2. Shri B. K. Sinha3. Shri R. K. Tamta4. Shri Pratap Singh5. Shri S. C. Agrawal	1982-83

Mid career training- the institutions

S no	Institution/ Country	Support institution
1	IGNFA	TERI, ICFRE
2	IIM	Ahmedabad, Lucknow, Bangalore
3	USA	Colarado University Yale University
4	Finland/Russia	
5	Canada	University of British Columbia
6	Sweden	Swedish Academy of Forestry

Features of presentation

- Initial impact of the MCT on officers and Dept.
- New initiatives taken/proposed by SFD
- Improvement Of MCT program- suggestions

Initial impact of the MCT on officers and SFD

Officers

- Improvement of knowledge base
- Leadership and change management
- Orientation towards Research based Mgmt.
- Rejuvenation of personal energy
- Holistic Outlook
- A strong will to think big and act big

SFD

- Curiosity about MCT
- Exposure to new ideas

New initiatives taken/proposed by SFD

No.	Subject	Status
1	Forest management	
	- Silvicultural system for multiple objectives	Concept
	- Wild life management	Planning
	- Fire management	Execution
2	Forest productivity	
	- Production forestry	Execution
	- Intensive management of degraded forests	Execution
	- Farm Forestry	Planning
3	Ecosystem services	
	- Watershed management	Concept
	- Climate control	Planning/ Execution
4	Restructuring of forest department	Concept
5	Human resource development	Planning

Forest management

Silvicultural system for multiple objectives

□ Multiple objectives(Values)

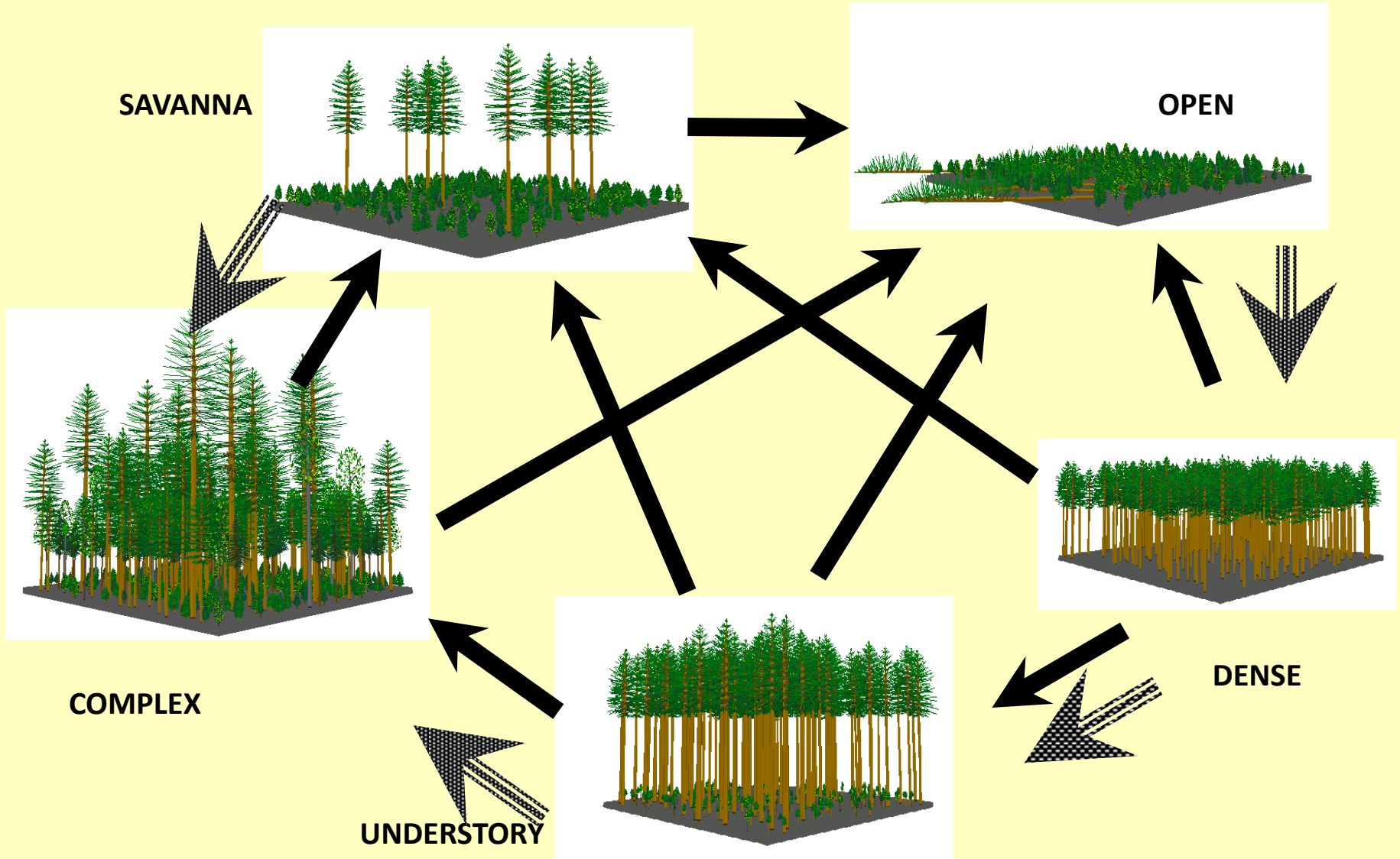
- Timber - Maximise Volume to be harvested
- NWFP - Maximise Standing Volume of NWFP Sps
- Wild life - Maximise open areas in forests
- Bio-diversity - optimise Standing volume in top& middle canopies

□ Select best combination of values through iteration

Resource person Prof. Chad oliver, yale uty

NEW SCIENTIFIC PARADIGM:

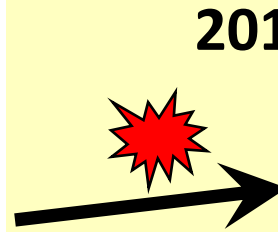
Forests are dynamic. They change with growth and disturbances.
They contain many structures.



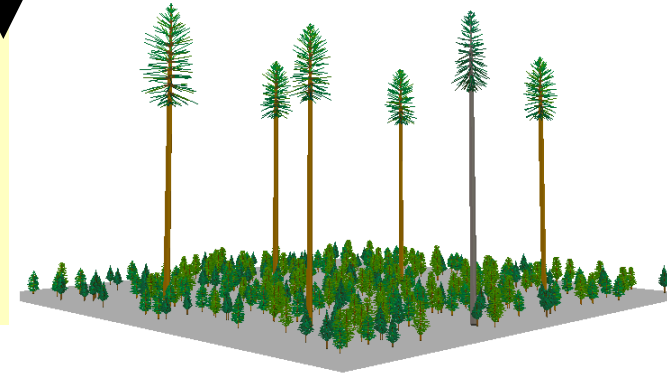
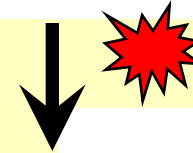
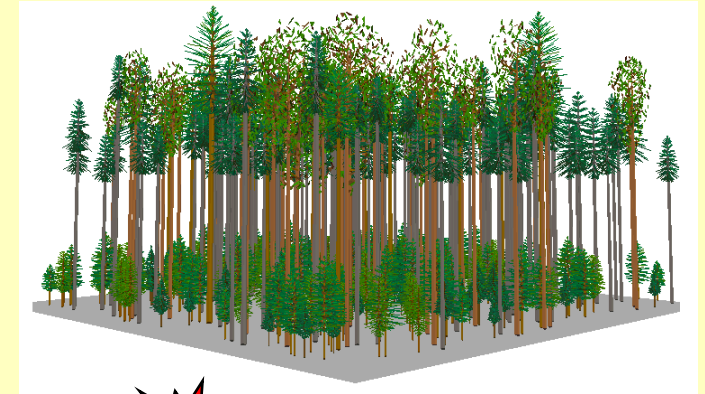
SILVICULTURE PATHWAY (example)



1998

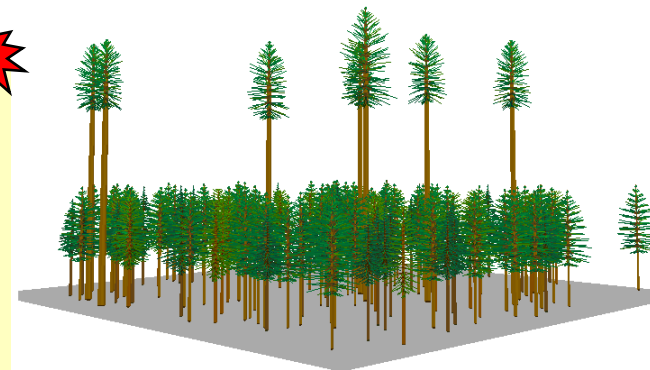
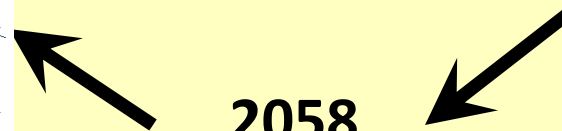


2018

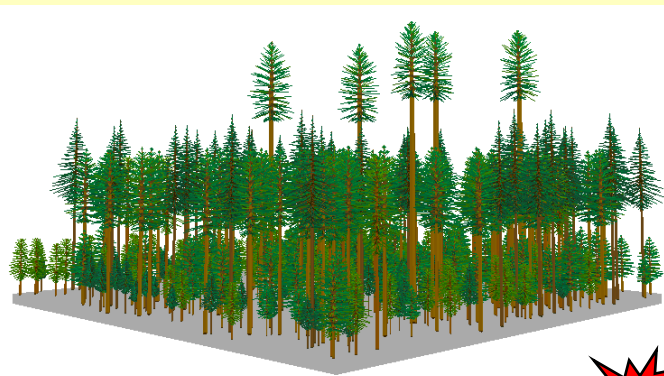


2038

2058



2078



Multiple values-targets

S no	Value	parameter	target	Actual value	Remarks
1	Timber	Harvested volume	> 20 cum/ha	21 cum /ha	above selection girth
2	Wild life	open forest	Min 15% of Forest area	16%	Savanna type of forest land
3	NWFP's	Standing volume of NWFP species	Min 20 % of total standing volume	22%	in 45-90 cm girth class
4	Bio diversity	middle canopy standing volume	About 40-50% of standing volume	52 %	For maintaining multi canopy forest

Matrix method for best option on a scale of 10

S no	Value	Option 1	option 2	option3	option 4
1	Timber	8	4	5	6
2	Wild life	4	7	4	3
3	NWFP's	6	6	8	7
4	Bio diversity	5	7	6	8
	Total	23	24	23	24

Wild life management

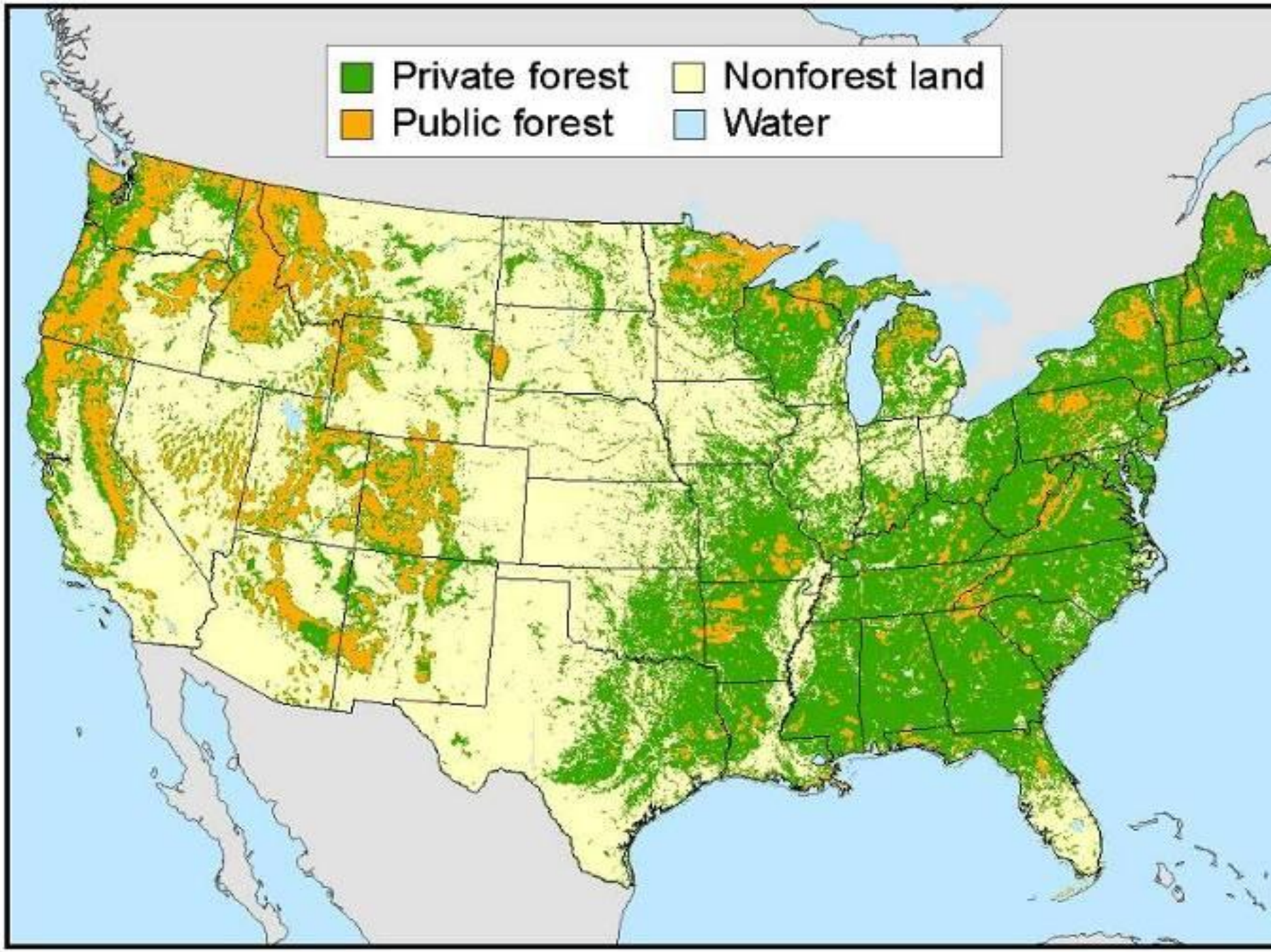
- ❑ Create openings/grass meadows in core areas of PA's
 - ❖ Create openings through fellings in PA's
 - ❖ Shifting of villages out of PA's
- ❑ Increase density of buffers
- ❑ Use wild life to control management of weeds
- ❑ Increase Compensation to man animal conflict cases to get people support
- ❑ Increase protection force
- ❑ Massive Awareness program

Fire management

- prepare fire management plan of the state
- Create separate fire management fund
- Fire incidence monitoring through google and Information transmission thru CUG mobile
- incentives to JFMC's/SHG's for fire protection
- separate fire fighting force at range level
- training of staff / JFMC's members
- Monitoring of fire mgmt thru application software
- Budget allotment based on fire sensitivity

Forest productivity

- ❑ Natural forests
 - ❖ Identification of degraded areas thru RS/GIS/Google –FSI maps
 - ❖ Development of treatment models/ model projects
 - ❖ Establish Research/ demonstration plots
 - ❖ Assisted natural regeneration works for production coupes
 - ❖ Focus on natural stock improvement over planting
 - ❖ rehabilitation of degraded forests
 - ❖ Improved planting techniques using tall planting technology
 - ❖ Planting stock improvement
 - ❖ Enrichment planting
- ❑ Farm Forestry- short rotation crops
- ❑ Urban forestry
- ❑ Certification of wood/non-wood to check illegal removals
- ❑ Strengthen forest research infrastructure



Conversion to intensive short rotation plantations

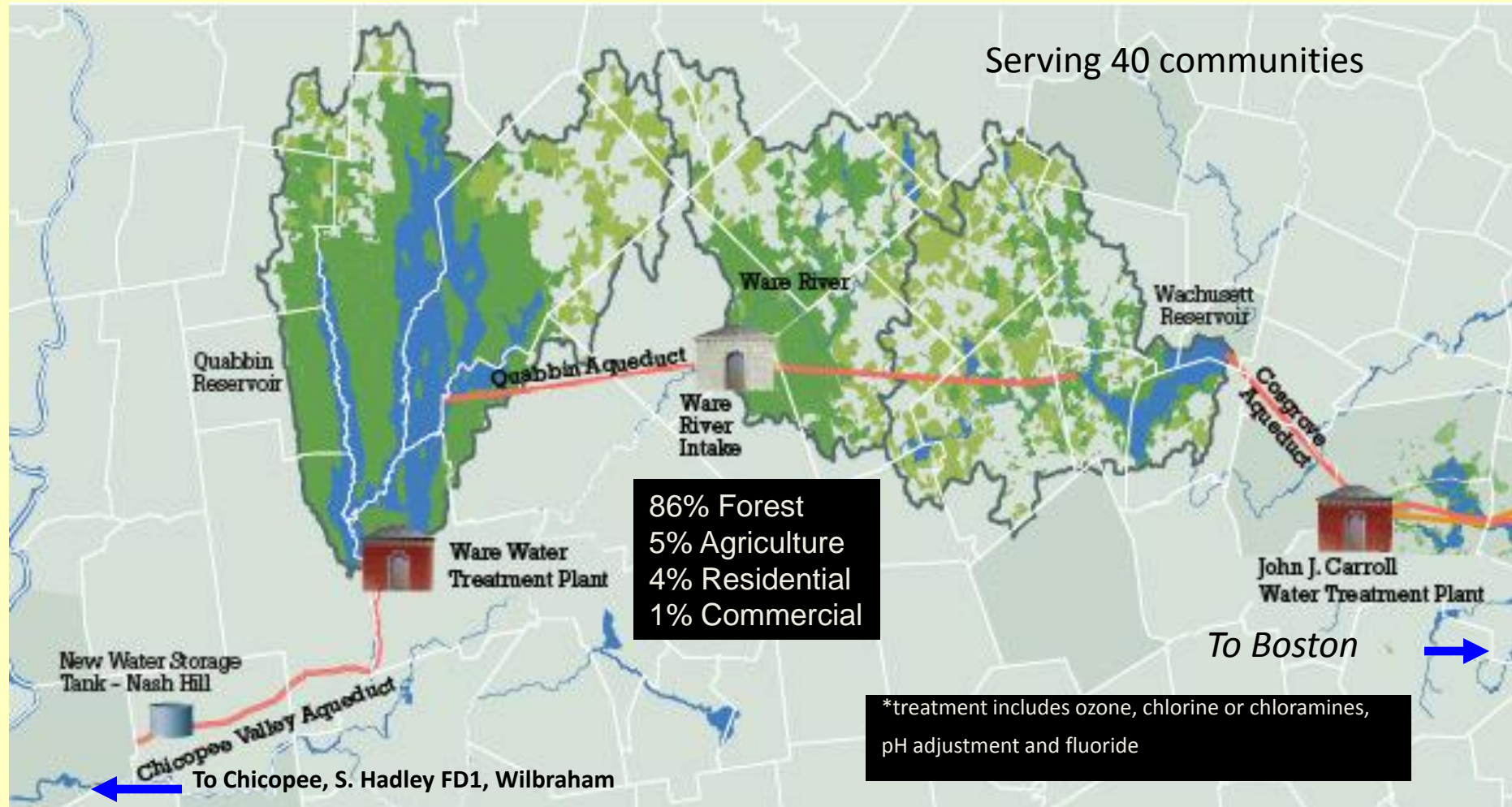


Watershed forest management

- ❑ Shift from water *quantity* to water *quality* focus
- ❑ multi canopy forest having mix of tree age classes is very efficient over even aged stand in actively capturing available nutrients before they reach water sources.
- ❑ The forest in watershed area is divided into 3 zones. Each zone will be brought under different felling regime.
- ❑ Maximum of 25% area is felled in 10 years
- ❑ harvestable volume is less than increment

Boston's Water Supply

2.2 million consumers (metro Boston and Chicopee Valley)
250 - 300 million gallons/day, treated* but unfiltered



Certification

- ❑ Only 5% of US Forests are certified
- ❑ Certification led to stabilized market to big farmers and better prices to small farmers
- ❑ Certification can lead to reduction in illicit felling of wood, non destructive harvesting of NWFP's and medicinal plants
- ❑ Certification can lead to promotion of farm/agro forestry
- ❑ CGCERT got accreditation from APEDA for certification

climate control

- ❑ Greening of central part of CG for climate change
- ❖ Promote agro/ farm forestry
- ❖ Urban forestry
- ❖ Road /railway/canal/ river side plantations
- ❖ Greening of barren hills
- ❖ Rejuvenation of water bodies
- ❖ Catchment area treatment of major rivers
- ❖ Green Engineering



New initiatives in Chhattisgarh Forestry

Human resource development

- ❑ Training on Leadership and change management by IIM
 - ❖ Training of decision makers
- ❑ Research tie up between foreign universities and SFRTI
- ❑ Foreign study visits and exchange programs
- ❑ Restructuring of forest department
 - ❖ Phase wise recruitment/ timely promotions
 - ❖ increase no. of functional heads
 - ❖ Est. of Support institutions
 - Forest crime control beaurau
 - State Geomatic centre
 - State Forest information centre
 - Farm forestry corporation
 - Forest produce processing
 - Planting stock improvement
 - State Forest Fire Authority

Improvement Of MCT program

Few Suggestions

- ❑ Content
 - ❖ Silviculture
 - ❖ Productivity, Rehabilitation
 - ❖ case studies by Serving forest officers
- ❑ Support organisations
 - ❖ IGNFA & IIM -Consortium of foreign universities
 - ❖ Involvement of IITs and corporates
- ❑ Time of visiting foreign countries
- ❑ IT and GIS application software,
- ❑ Forest literature
- ❑ Preparatory works, Follow up action

Thank u